

**Park and Recreation Department**  
**Administrative Office**  
**122 S. Garden St.**  
**New Ulm MN 56073**

Ice or Dry Floor Rentals:  
 Cheryl Kormann, Assistant Director  
 cherylk@newulmmn.gov 507-359-8340

Programs:  
 Liz Malloy, Program Supervisor  
 lizm@newulmmn.gov 507-233-2121  
 Ext 203

Maintenance:  
 Ryan Weier, Maintenance Supervisor  
 ryanw@newulmmn.gov 507-233-2121  
 Ext 208

Bob Haala, Crew Leader  
 bobh@newulmmn.gov 507-233-2121  
 Ext 205

Administration  
 Joey Schugel, Park and Rec Director  
 joeys@newulmmn.gov 507-233-2121  
 Ext 202

Donitta Trebesch, Admin Assistant  
 donittat@newulmmn.gov 507-359-8344  
 parkandrec@newulmmn.gov

For further inquiries, please contact  
 507-233-2109  
 Or visit us on the web at:  
 www.newulmmn.gov

Like us on Facebook  
 Follow us on Instagram



**Admission Fees**

Daily Open Skate/ Hockey/Broomball	\$5.00
12-punch card	\$45.00
Rock on Ice Daily	\$5.50
Rock on Ice 12-punch card	\$49.50
Rental Skates	\$3.00/pair
Skate Sharpening	\$5.00/pair

**Membership Fees**

	Res	Non-Res
Single	\$100	\$110
Double	\$150	\$165
Each Add'l	\$45.00	\$49.50

For the most up-to-date  
 Program schedules,  
 Visit us at  
 www.newulmmn.gov  
 Park and Rec—Schedules



**NEW ULM  
 CIVIC CENTER**

1212 N. FRANKLIN STREET  
 NEW ULM, MN 56073



Photo credit: Rachel Hoffmann

## Ice Rinks

- 1 Regulation Ice Sheet  
85' x 200' (bleacher seating = 300)
- 1 Olympic size Ice Sheet  
100' x 200' (bleacher seating = 1000)
- 8 team rooms
- Large concourse area on upper level with tables, seating, common areas & concessions

### Ice Rental Fees

Listed fees do not include sales tax

	Resident	Non-Res
Prime Hourly Rates	\$168.00	\$184.80
Non Prime Hourly Rates (Sept 1-May 31, Mon.-Fri. 8 a.m.-3 p.m.)	\$109.20	\$120.12
Discounted 200-hr agreement	\$161.28/hour	
350-hr agreement	\$157.92/hour	
600-hr agreement	\$154.56/hour	
Single Game	\$595.00	
Double Game	\$892.50	

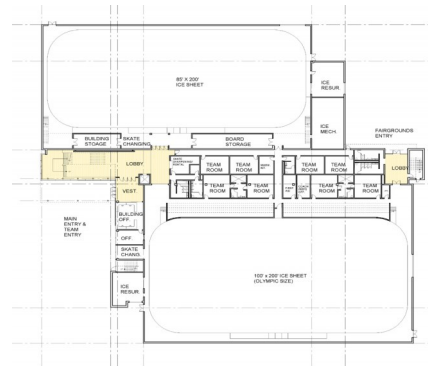
Ice prices effective  
July 1, 2023 through June 30, 2024

### Meeting Space Rental Fees

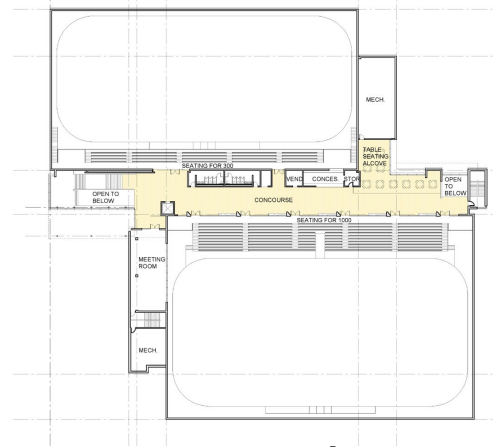
Listed fees include sales tax

	Resident	Non-Res
Hourly Rates	\$27.00	\$29.70
Daily	\$216.00	\$273.60
Party Package Inc 10 admissions to open skate, rock on ice, open hockey & 1.5hrs in party room	\$104.00	\$114.40

## Facility Floor Plan



Main Level



Upper Level



## Dry Floor

Large Space for  
Banquets, Shows & Expos

- Ideal for local businesses or groups, retail sales, etc.
- Warming kitchen available for caterers
- Tables, chairs, staging, portable dance floor, pipe and drape available for rent

### Dry Floor Rental Fees

Includes space, warming kitchen  
and sales tax

	Resident	Non-Res
Hourly Rates	\$105.00	\$115.50
Daily Rates	\$840.00	\$924.00
Discount 2-6 days	\$100	\$110
7+ days	\$200	\$220
Additional fees (upon request): Tables Chairs Staging, Pipe/drape, Portable dance floor Temp Liquor Permit (serviced by current on-sale license holder) issued by City)	\$1.00/table \$ .25/chair \$80.00 \$100.00 + security charges	